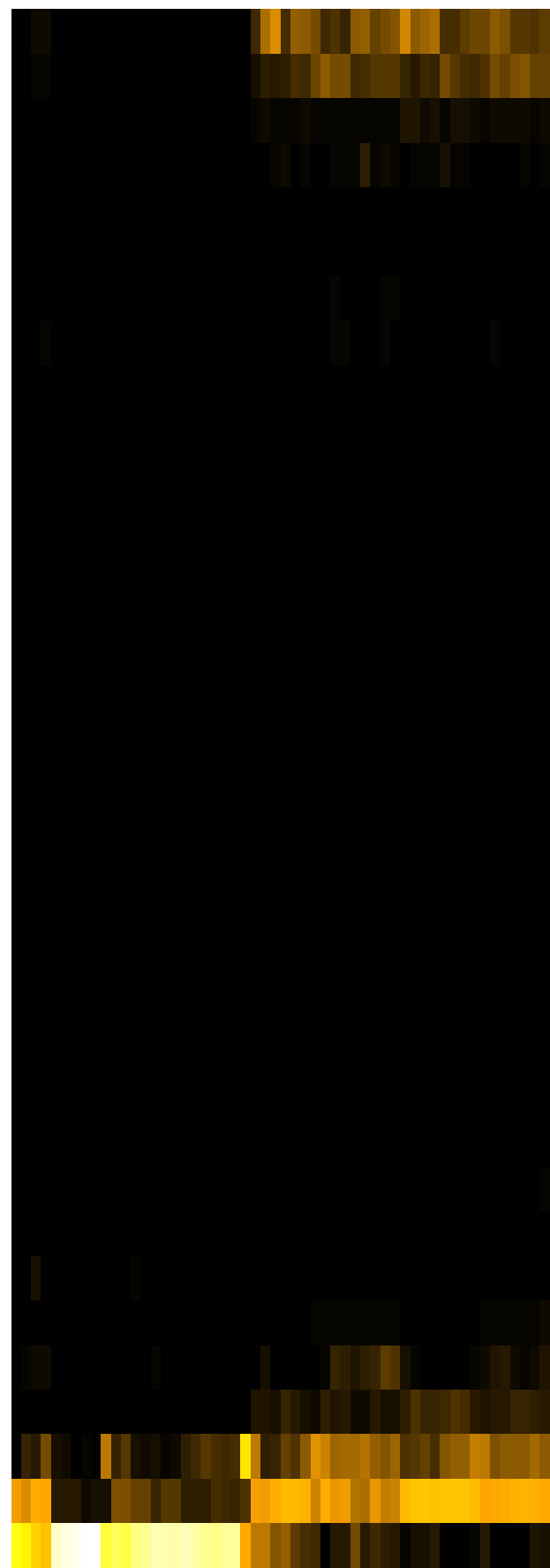
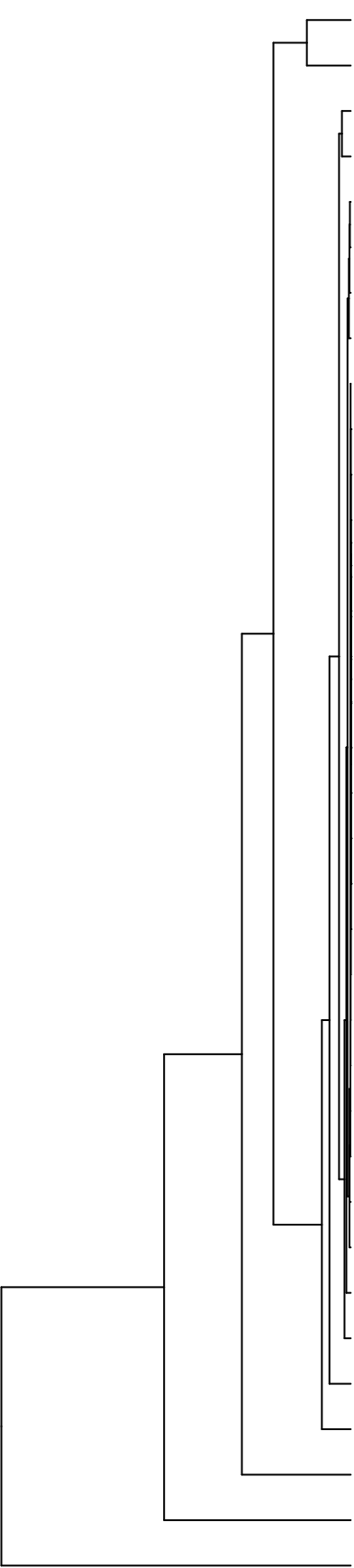


Group006
 I Final -PMA
 G Final -PMA



- Veillonellaceae
- Pasteurellaceae
- Actinomycetaceae
- Micrococcaceae
- Porphyromonadaceae
- Prevotellaceae
- Leptotrichiaceae
- Campylobacteraceae
- Atopobiaceae
- Propionibacteriaceae
- Phyllobacteriaceae
- Yersiniaceae
- Moraxellaceae
- Sphingomonadaceae
- Microbacteriaceae
- Rhizobiaceae
- Weeksellaceae
- Flavobacteriaceae
- Hymenobacteraceae
- Saccharibacteria_(TM7)_[F-2]
- Mycobacteriaceae
- Absconditabacteria_(SR1)_[F-1]
- Burkholderiaceae
- Saccharibacteria_(TM7)_[F-1]
- Erysipelotrichaceae
- Comamonadaceae
- Pseudomonadaceae
- Lachnospiraceae
- Staphylococcaceae
- Gemellaceae
- Fusobacteriaceae
- Carnobacteriaceae
- Neisseriaceae
- Streptococcaceae
- Enterobacteriaceae

- F28914.S441
- F28914.S600
- F28914.S448
- F28914.S443
- F28914.S459
- F28914.S608
- F28914.S457
- F28914.S598
- F28914.S442
- F28914.S445
- F28914.S458
- F28914.S463
- F28914.S297
- F28914.S301
- F28914.S285
- F28914.S142
- F28914.S124
- F28914.S139
- F28914.S123
- F28914.S138
- F28914.S288
- F28914.S286
- F28914.S282
- F28914.S300
- F28914.S144
- F28914.S128
- F28914.S126

Samples

Family